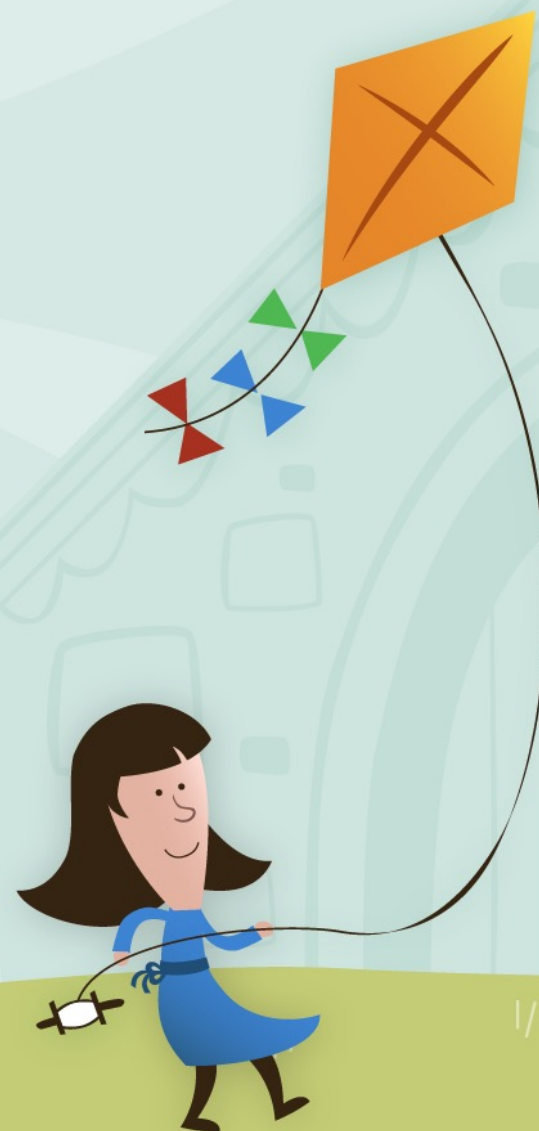




All Saints CEVA  
Primary School

# Local Offer & SEND Information Report



**Slide 3:** Who is SENDCo in our school?

**Slide 6:** How does our school identify that children have Special Educational Needs and Disability (SEND)?

**Slide 11:** How will our school teach and support children with SEND?  
External Agencies

**Slide 13:** How will our school teach and support children with SEND?  
Education, Health Care Plan (EHCP)

**Slide 16:** How have we made our school accessible to children with SEND?

**Slide 4:** How are the teachers in our school helped to work with children with a SEND and what training do they have?

**Slide 7:** What should parents/carers do if they think that their child has SEND? How can they raise concerns?

Local Offer Provision at  
All Saints CEVA  
Primary School  
(Please select)

**Slide 17:** How do we assess and evaluate the provision that has been arranged for your child and the progress that they are making?

**Slide 19:** How do we arrange and support transfer to another school or moving to another year?

**Slide 5:** What are the first steps our school will take if Special Educational Needs (SEND) are identified?

**Slide 8:** How will our school include parents/carers in planning support?

**Slide 14:** Who will be working with your child?

**Slide 18:** Where can you find our Inclusion policy and what is the role of the Governors?

**Slide 20:** How can the Local Education Authority support me?

**Slide 9 & 10:** How will our school teach and support children with SEND?

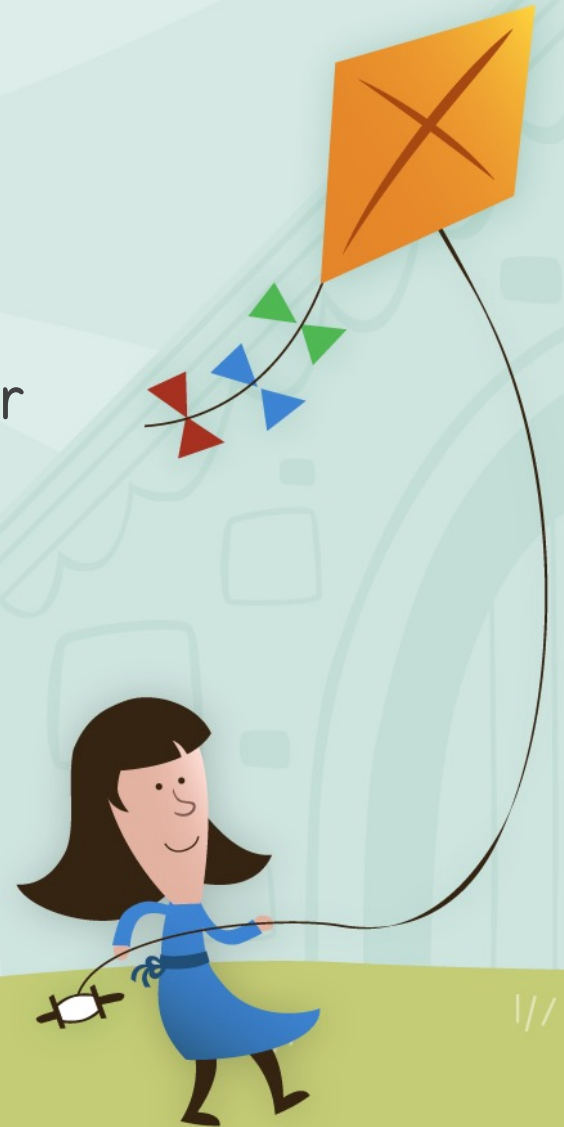
**Slide 12:** How will our school teach and support children with SEND?  
High Needs Funding (HNF)

**Slide 15:** How does our school provide support to improve the emotional and social developments of all our pupils?



# Who is the SENDCo:

In our school the role of Special Educational Needs Coordinator (SENDCo) comes under our Inclusion Leader role who is also our Deputy Head Teacher.

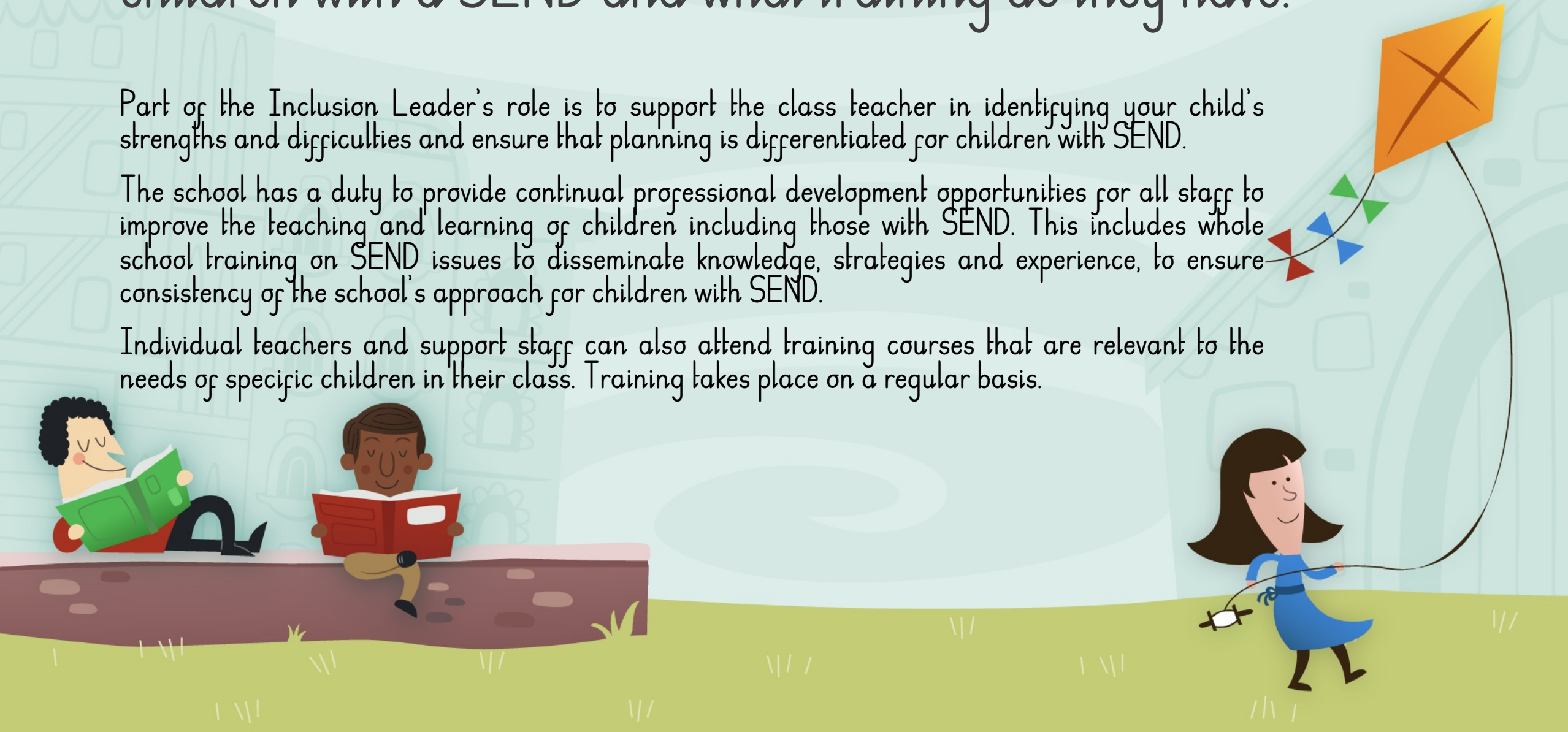


# How are the teachers in our school helped to work with children with a SEND and what training do they have?

Part of the Inclusion Leader's role is to support the class teacher in identifying your child's strengths and difficulties and ensure that planning is differentiated for children with SEND.

The school has a duty to provide continual professional development opportunities for all staff to improve the teaching and learning of children including those with SEND. This includes whole school training on SEND issues to disseminate knowledge, strategies and experience, to ensure consistency of the school's approach for children with SEND.

Individual teachers and support staff can also attend training courses that are relevant to the needs of specific children in their class. Training takes place on a regular basis.





# What are the first steps our school will take if Special Educational Needs (SEND) are identified?

When a teacher or parent has raised concerns about your child's progress, and highly differentiated, targeted teaching has not had the desired impact, the teacher will speak to the Inclusion Leader to discuss what the next steps may be. From here, our identification process will begin and through close monitoring, the specific needs of your child will be established. Targeting teaching or interventions will be used, whereby your child may receive additional support in small groups either in or outside the classroom. The progress your child makes is closely monitored and regularly reviewed on our internal monitoring system (EduKey Provision Mapping).

If the teacher still feels that your child is not making the expected progress, they will arrange a meeting with yourself and the Inclusion Leader to discuss this with you in more detail and decide next steps.

The new SEND Code of Practice (2015), describes support of this nature as SEN Support. The cycle of 'Assess, Plan, Do and Review' is called the 'Graduated Approach'. All Saints Primary adopt this way of working in order to ensure that any difficulties are identified early and the appropriate support is put in place.





When children have already been identified with SEND before they start here, we work with the people who already know them and use the information already available to identify what their SEND will be in our school setting and how we can manage it.

If you tell us you think your child has a SEND we will discuss this with you and look into it. We will share what we discover and agree with you what we will do next and what you can do to help your child.

If our staff think that your child has a SEND this may be because they are not making the same progress as their peers; for example, they may not be able to answer questions, retain information or are finding learning generally difficult.

We will observe them, assess their understanding of what we are doing in school and gather information to find out what may be causing the difficulty. Should we require further advice, we will contact the specialists from external services. You will be fully informed and involved in any referrals completed.

# How does our school identify that children have Special Educational Needs and Disability (SEND)?

# What should parents/carers do if they think that their child has SEND? How can they raise concerns?

- If you have concerns about your child's progress, you should speak to your child's class teacher in the first instance.
- If you have concerns about your child's development you can also ask your GP to make a referral independently of school.
- The Inclusion Leader will also support you and will liaise regularly with your class teacher.
- If you are not happy that your concerns are being managed appropriately and that your child is still not making progress, you should request a meeting with the Inclusion Leader directly.
- If you continue to have concerns, you can request a meeting with the Head Teacher.



# How will our school include parents/carers in planning support?

As their parent/carer, you know your child best and as such, you are one of school's greatest resources in addressing their special educational needs.

We aim to involve parents and, where appropriate, pupils at every level of support.

The Inclusion Leader is available to meet with you to discuss your child's progress or any concerns/worries you may have by appointment.

All information from outside professionals will be discussed with you, sometimes in a report, and sometimes in a meeting organised with them directly.







### Class teacher:

Through excellent targeted classroom teaching also known as Quality First Teaching.

- Ensure that the teacher has the highest possible expectations for your child and all pupils in their class.
- Ensure that all teaching is based on building on what your child already knows, can do and can understand.
- Put in place different ways of teaching so that your child is fully involved in learning in class. This may involve things like using more practical learning or providing different resources adapted for your child.
- Put in place specific strategies (which may be suggested by the Inclusion Leader or outside agencies) to support your child to learn.

# How will our school teach and support children with SEND?



Specific group work within a smaller group of children.

This group may be in the classroom or outside of the class run by a Teaching Assistant.

These are often called 'Intervention' groups.

- Your child's teacher will have carefully checked on your child's progress and will have decided that your child has gaps in their understanding/learning and needs some extra support to help them make the best possible progress.
- He/ She will plan group sessions for your child with targets to help your child to make more progress which will be documented (Graduated approach).
- A Teaching Assistant/teacher or outside professional (like a Speech and Language Therapist) will work on the targets set for your child.

How will our school teach and support children with SEND?

# How will our school teach and support children with SEND?

## External Agencies

- If your child has been identified as needing more specialist input instead of or in addition to excellent classroom teaching and intervention groups, referrals will be made to outside agencies to advise and support the school in enabling your child to make progress.
- Before referrals are made, you will be asked to come to a meeting to discuss your child's progress and help plan possible ways forward.
- You may be asked to give your permission for the school to refer your child to a specialist professional e.g. a Speech and Language Therapist, Educational Psychologist, or behaviour specialists (Jogo Behaviour Support). This will help the school and yourself understand your child's particular needs and be able to support them better in school.
- The specialist professional will work with your child to understand their needs and make recommendations, which may include:
  - Making changes to the way your child is supported in class e.g. some individual support or changing some aspects of teaching to support them better
  - Support to set better targets which will include their specific expertise
  - A group run by school staff under the guidance of the outside professional e.g. a social skills group or sensory circuit
  - A group or individual work with outside professional
- The school may suggest that your child needs some agreed individual support in school. They will tell you how the support will be used and what strategies will be put in place.



# How will our school teach and support children with SEND?

## High Needs Funding (HNF)

- If continued difficulties are identified, despite significant support and following the 'assess, plan, do and review' model, the school may apply for additional funding from the Local Authority. This is known as High Needs Funding.
- This **may** result in some additional one-to-one support for parts or all of the school day.





# How will our school teach and support children with SEND?

## Education, Health Care Plan (EHCP)

- The school (or you) can request that the Local Authority (LA) carry out a statutory assessment of your child's needs. This is a legal process.
- After the school have sent in the request to the LA (with a lot of information about your child, including some from you), they will decide whether they think your child's needs (as described in the paperwork provided), seem complex enough to need a statutory assessment. If this is the case they will ask you and all professionals involved with your child to write a report outlining your child's needs.
- After the reports have all been sent in the LA will decide if your child's needs are severe and complex. If this is the case they will write an EHC Plan. If this is not the case, they will ask the school to continue with the support and may set up a meeting in school to ensure a plan is in place to ensure your child makes as much progress as possible.
- The EHC Plan will outline the provision your child will receive and what strategies must be put in place. It will also have long and short term goals for your child.



For Further information about the EHCP process, please speak with the Inclusion Leader in the first instance or contact IASS (Information and Advice Services) <http://www.iassnorthants.co.uk/Pages/home.aspx>



# Who will be working with your child?

Within our school your child will have a class teacher and also access at times from a Teaching Assistant. Your child may also be assessed by the Inclusion Leader and may work with other professionals who are monitoring outcomes of SEN provision, including the SEND Governor.

Other people or external agencies that may be involved include:

- Inclusion Teaching Assistant (ELSA trained)
- Specialist Support Services
- Educational Psychologist
- Jogo Behaviour Support
- School Nurse
- Occupational Health
- Physiotherapy
- Speech and Language Service
- CAMHS





Our school considers that the emotional and social development of all our children is of great importance and invests a significant amount of resources to pastoral care. All staff in school support children's emotional and social development, but more direct work is carried out by our Inclusion Teaching Assistant who works with children to build confidence and self esteem, develop resilience and discuss worries and social difficulties that arise.

Some of our children with more complex emotional and social difficulties will take part in our Emotional Literacy Support Assistance (ELSA) programme, delivered by our trained Inclusion TA.

Our school has a policy of zero tolerance on bullying and all relevant policies are available on the school's website.

How does our school provide support to improve the emotional and social developments of all our pupils?

# How have we made our school accessible to children with SEND?

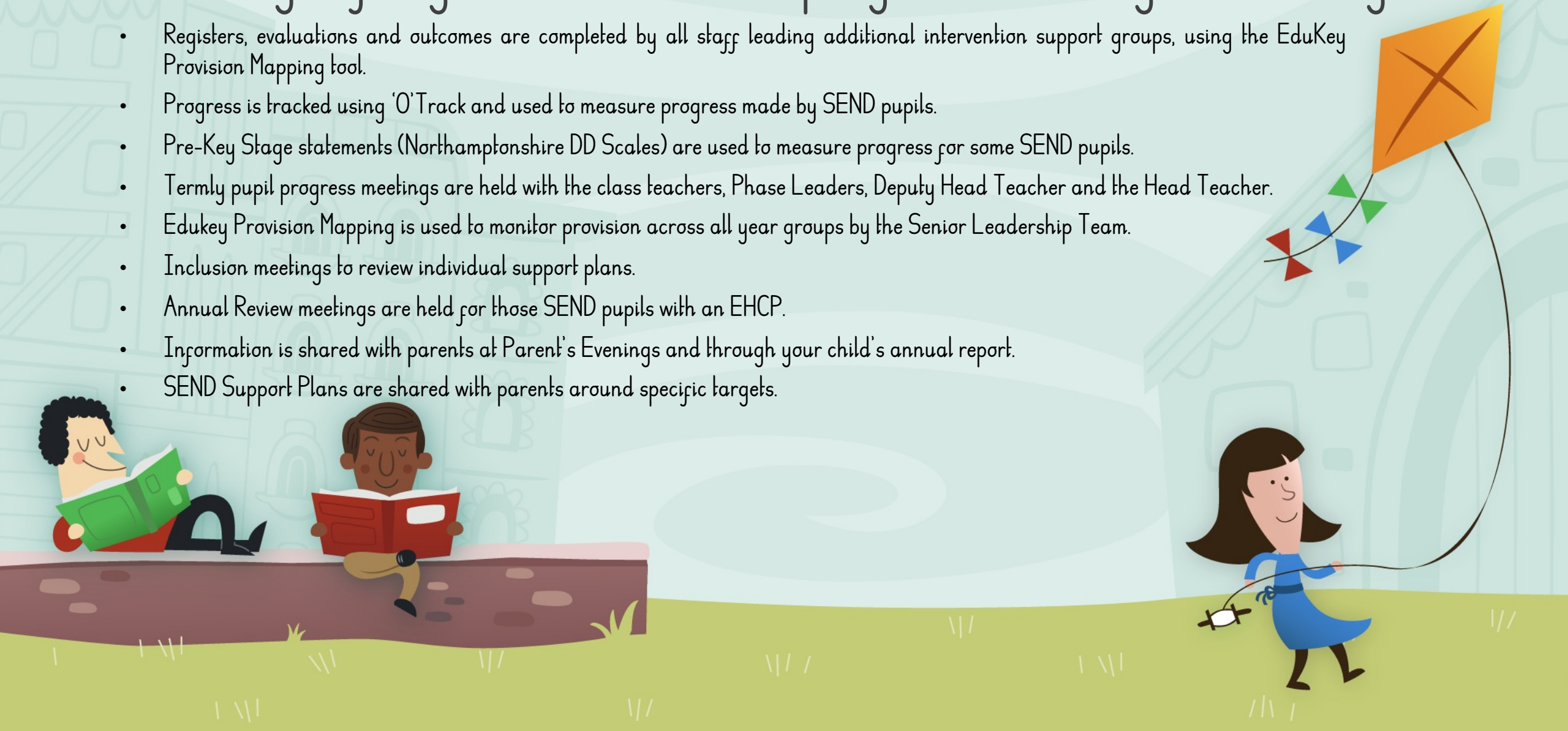
- Our school is accessible to children with physical disability via wide open corridors, disabled toilets and disabled parking spaces.
- We ensure that equipment used is accessible to all children regardless of their needs.
- Our school has disabled access toilets.
- Our school has a sensory room which is available to all children.
- Enrichment activities are extended to all pupils irrelevant of their needs.
- All extra-curricular clubs are fully inclusive and if necessary, school will make additional arrangements. As part of our inclusive curriculum, all school trips (including residential trips) are available to all pupils, with any extra SEND provision being made where applicable.
- Also see our Accessibility Policy on our school website.





# How do we assess and evaluate the provision that has been arranged for your child and the progress that they are making?

- Registers, evaluations and outcomes are completed by all staff leading additional intervention support groups, using the EduKey Provision Mapping tool.
- Progress is tracked using 'O'Track and used to measure progress made by SEND pupils.
- Pre-Key Stage statements (Northamptonshire DD Scales) are used to measure progress for some SEND pupils.
- Termly pupil progress meetings are held with the class teachers, Phase Leaders, Deputy Head Teacher and the Head Teacher.
- Edukey Provision Mapping is used to monitor provision across all year groups by the Senior Leadership Team.
- Inclusion meetings to review individual support plans.
- Annual Review meetings are held for those SEND pupils with an EHCP.
- Information is shared with parents at Parent's Evenings and through your child's annual report.
- SEND Support Plans are shared with parents around specific targets.



# Where can you find our Inclusion Policy and what is the role of the Governors?

All state maintained primary, secondary and special schools, are accountable to their governing bodies, which in turn are accountable to parents and the community.

The Governing Body is responsible for the conduct of it's school, and must promote high standards of educational achievement at the school.

The SEND Governor must liaise with the Inclusion Leader to try to ensure that the school makes the necessary provision for every pupil with SEND.

A SEND Governor provides the link between the Governing Body and the school in relation to pupils with SEND. It is their role to help raise awareness of SEND issues at Governing Body meetings and give up- to-date information on SEND provision in our school.

For more detailed information about how we support SEND at our school, please see the Inclusion Policy and other related policies (including the Behaviour Policy) on our school website at:

<https://allsaintscevakingsthorpe.org.uk>



# How do we arrange and support transfer to another school or moving to another year?

We recognise that 'moving on' can be difficult for a child with SEN and take steps to ensure that any transition is as smooth as possible.

If your child is moving to another school:

- We will contact the school SENDCo and ensure he/she knows about any special arrangements or support that needs to be made for your child.
- We will make sure that all records about your child are passed on as soon as possible.

When moving classes in school:

- Information will be passed on to the new class teacher IN ADVANCE and if necessary a planning meeting will take place with the new teacher.
- Some children benefit from having a transition book to support them understand moving on, this will be made available for them.

In Year 6:

- The Inclusion Leader will discuss the specific needs of your child with the SENDCo of their secondary school.
- Your child may be invited to additional visits at their new Secondary school, designed for pupils with SEND or additional needs.



# How can the Local Education Authority support me?

In line with the SEND Code of Practice (2015) all Local Educational Authorities must display their own Local Offer of support for children and young people with Special Educational Needs and Disabilities (SEND) and the families that support them. Please see the following link to see Northamptonshire's Local Offer:

[www.westnorthants.gov.uk/local-offer](http://www.westnorthants.gov.uk/local-offer)

Information and Advice Services are support for parents of children and young people with SEND

<http://www.iassnorthants.co.uk/Pages/home.aspx>

Northamptonshire Mental Health Gateway

<http://www.asknormen.co.uk/>

Northants Parent Forum

<http://www.npgg.co.uk/>

Nationwide support for professionals within SEND

<http://www.nasen.org.uk/>

